

Geonautics Document Template Document

Project Name: Geonautics R&D Project

Document Title: Document Template

Creation Date: 27-June-2003

Revision: 27-June-2003

Project Company: Geonautics

Contents

Contents	i
List of Figures	i
1. Driver Installation Procedure	2

List of Figures

Figure 1.1 - Example Caption.....	Error! Bookmark not defined.
-----------------------------------	-------------------------------------

1. Driver Installation Procedure

1. Place the Whisper installation CD in the computers' CD-ROM drive. (Cancel the Whisper program auto-install if the Whisper software has already been installed.)
2. Plug the USB cable into the computer. The 'Add New Hardware Wizard' should be activated which is searching for 'Geonautics Dongle I'.



3. Press the 'Next' button.
A new wizard dialog box should appear asking you to select possible search locations for the device driver.



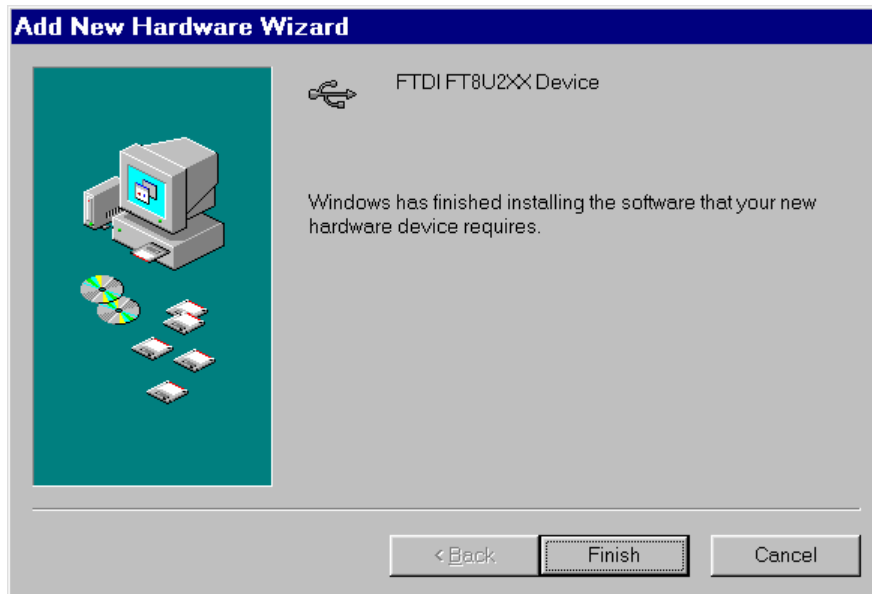
4. Tick the 'Specify a location' option and press the 'Browse' button.
5. Select the Drivers directory on the CD-ROM drive (probably D drive) and press the 'O.K.' button. The drop down box under the 'Specify a location' option should now display 'D:\Drivers'.
6. Press the 'Next' button. A confirmation dialog box displaying the 'Geonautics Dongle I Device' and location of the driver as 'D:\Drivers\GeonauticsDongle.inf' should now be visible.



7. Press the 'Next' button.

The driver should now be installing. A final dialog box should be displayed with 'Geonautics Dongle I Device' clearly written at the top of the dialog. The

dialog should state that 'Windows has finished installing the software that your new hardware device requires'.



8. Press the 'Finish' button. The appropriate USB driver should now be installed.